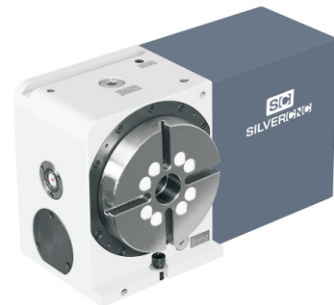


SC-C200 Specification

Introduction

1. Roller CAM struture, no backlash, high accuracy and efficiency
2. Platter Diameter 200mm, hydraulic brake
3. Suitable for installation on 850,650mm travel VMC

Dimensions	Table Diameter	mm	Ø200
	Diameter of Table Central Hole	mm	Ø75H7
	Center Height (Vertical)	mm	160
	T slot width	mm	12H7
	Guide Block width		18h7
	Net Weight (servo motor excluded)	kg	85

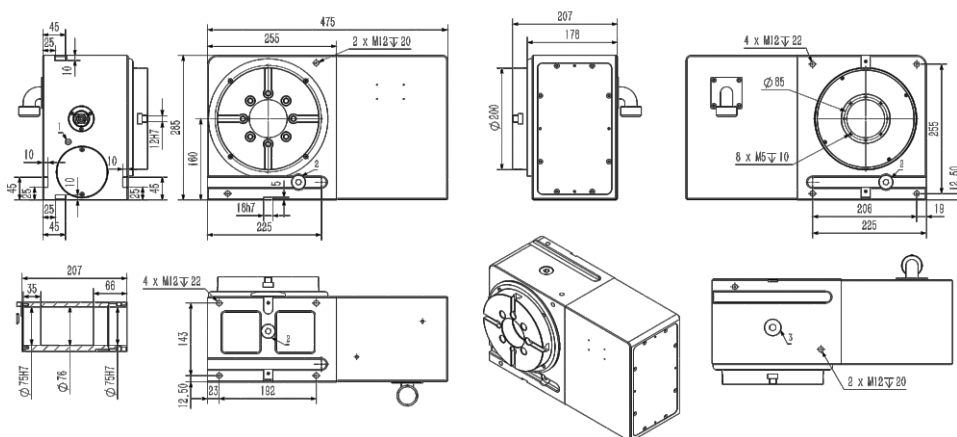


Roller CAM	Gear Ratio	/	50
	Max. Rotation(Calculate with Fanuc α Motor)	rpm	60
	Resolution	°	0.001
	Indexing Precision	sec.	±20
	Repeatability	sec.	±4

Allowable Workpiece Load				Clamping system		Allowable load (rotary table clamping)									
Vertical/kg		Horizontal/kg		pressure/MPa	Torque/N.m	F(N)		FXL(N.m)							
	120		260		260		4±0.5		700		19200		700		1300

Servo motor							
FANUC		MITSUBISHI	YASKAWA	SIMENS	SYNTEC	HEIDENHAIN	GSK
α	β						
aiF4	β is8	HG104S-D47	SGM7G-09A	1FK7060	S08-AM8-40	QSY116E	130SJT-M075D

SC-C200 Dimensions



1. 刹车液压口 Brake hydraulic portt
2. 排油孔 Oil of outlet
3. 进油孔 Oil of inlet
4. 排水口 Drain hole