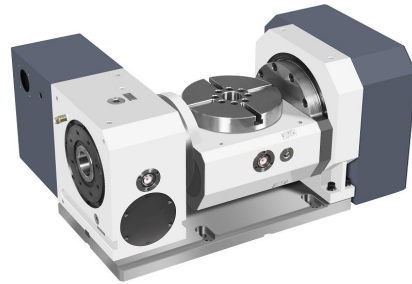


5axis rotary table specification (SC-RT170)



Advantages

The 5 axis rotary table is Roller CAM Driver one of the finest motion control mechanisms available. The unit is constructed from an input shaft (the roller gearcam) and a turret (output shaft) fitted with roller followers. The roller followers are preloaded against a screw-like input shaft to completely eliminate backlash. Our proprietary adjustment mechanism provides optimum preload. The roller followers lanted in the turret use internal roller bearings to transfer torque while rotating. This ensures zero backlash, outstanding precision, and excellent efficiency without causing wear, while providing long-term consistent accuracy

- 1、 No backlash(play) during the clockwise/anti-clockwise rotation
- 2、 No wear because power transfers through rolling contact
- 3、 High accuracy and good efficiency
- 4、 Preload and high rigidity



Specs

| Description | | Unit | SC-RT170 | |
|-----------------------------------|--|------------------|-----------------|-------------|
| Table Diameter | | mm | 200 | |
| Table Height (Vertical) | | mm | 230 | |
| Diameter of Table Central Hole | | mm | φ12 | |
| T-Slot | | mm | 12H7 | |
| Allowable Workpiece Load | Vertical  | kg | 35 | |
| | Horizontal  | kg | 50 | |
| Net Weight (servo motor excluded) | | kg | 170 | |
| Axis | | / | Rotary axis | Tilt axis |
| Cooling System | | / | Free Colling | |
| Transmission Mechanism | | / | Roller Gear Cam | |
| Angle range | | / | 360° | ±115° |
| Min. Increment | | deg. | 0.001 | 0.001 |
| Speed Reduction Ratio | | / | 1/40 | 1/80 |
| Rated / Max. Speed | | rpm. | 75 | 37.5 |
| Indexing Precision | | sec. | ±20 | ±40 |
| Repeatability | | sec. | ±4 | ±4 |
| Clamping System(pneumatic) | | Mpa | 0.6 | 0.6 |
| Clamping Torque | | N.m | 150 | 410 |
| Servo Motor Model | FANUC | Taper / Straight | αiF8 /βis12 | αiF8 /βis12 |
| | MITSUBISHI | Straight | HF154S | HF154S |
| | BROTHER | Straight | 1FK7063 | 1FK7063 |
| | YASKAWA | Straight | SGMGV-20A | SGMGV-20A |